

22

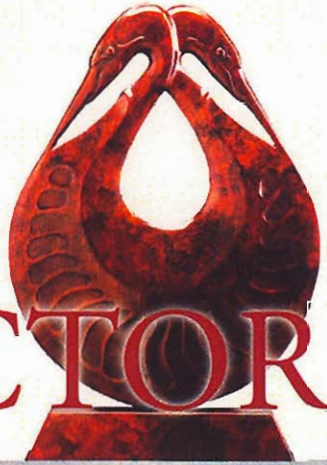
AMERICAN

art

PREVIEWS OF WORKS FOR SALE AT
UPCOMING SHOWS COAST TO COAST

AUGUST 2007
MONTHLY SCULPTURE
SECTION INSIDE

COLLECTOR



UPCOMING SHOW

Up to 10 works on show

August 2 – 31, 2007

Marion Meyer Contemporary Art

354 N. Coast Highway

Laguna Beach, CA 92651

(949) 497-5442

• SHOW LOCATION LAGUNA BEACH, CA

CONSTANCE EDWARDS SCOPELITIS

Monumental figures of today

After spending the last ten years doing narrative figurative paintings, Constance Edwards Scopelitis is returning to her roots as a classical realist figurative painter by doing monumental portraits inspired by classical Greek art and sculpture.

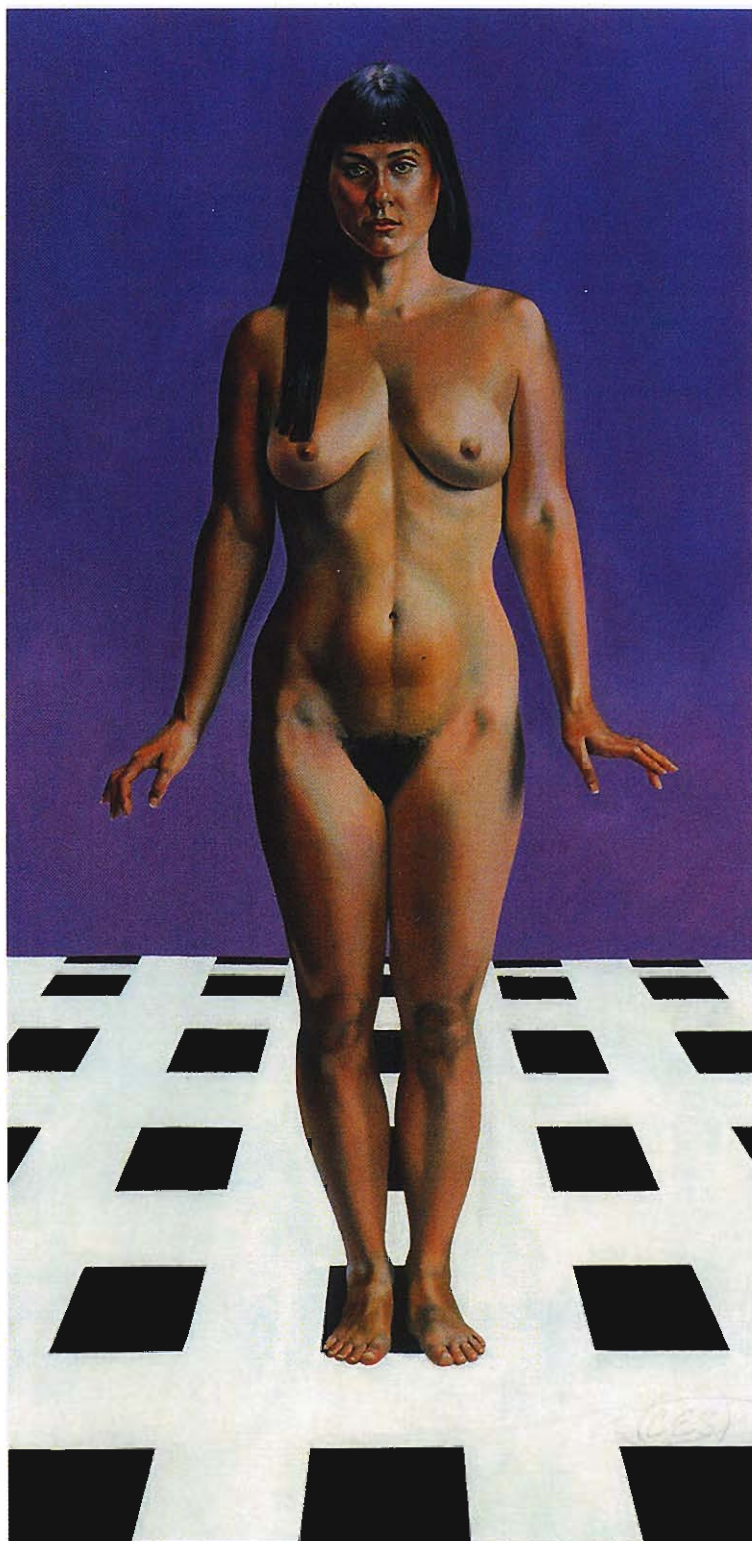
"All of these paintings are seven feet tall and I want them to be slightly bigger than life so they can't be ignored," says Scopelitis. "One of the things I'm looking for is the sheer beauty of skin color and I've chosen models with lots of different colors of skin. I want to put a contemporary spin on things; I'm uninterested in doing historical or religious figure type paintings because I want to do people of my own time."

While Scopelitis looks for this external beauty of the models, she also wants to delve deeper into the personalities of the people she paints and find out what really makes them tick.

"I choose different races, different ages, people who just pull me in personally with a power of presence of some kind," says Scopelitis. "I don't want these paintings to be so technically adept that they appear soulless because that is boring to me as well. I'm not going to do a figure just for the sake of showing off that I can draw every bone or kneecap. I'm interesting in using that technical ability but also putting a slant on it, a way to create a mystery of who that person is."

Scopelitis found inspiration to create these paintings on such a monumental scale after spending time in Athens, Greece as an art student.

"I never got over the impact of this building next to the Parthenon where I saw the *Four Maidens of the Karyatides*," says Scopelitis. "The four maidens are holding up the roof of the building and they are just gigantic looking women and goddess who have just such a hugeness and an impossibility of the weight of things. This led me to a return to classical realism, but I also wanted to put a twist on things and when you



ABLE, OIL ON LINEN, 36 x 84"

The Artist Says: The preternatural power in this figure both in her strong body and gaze speaks everything. She is about to speak, she is about to move, she is about to do something... Observers of the painting jump back in surprise and a little alarm when they see a third eye under her bangs.

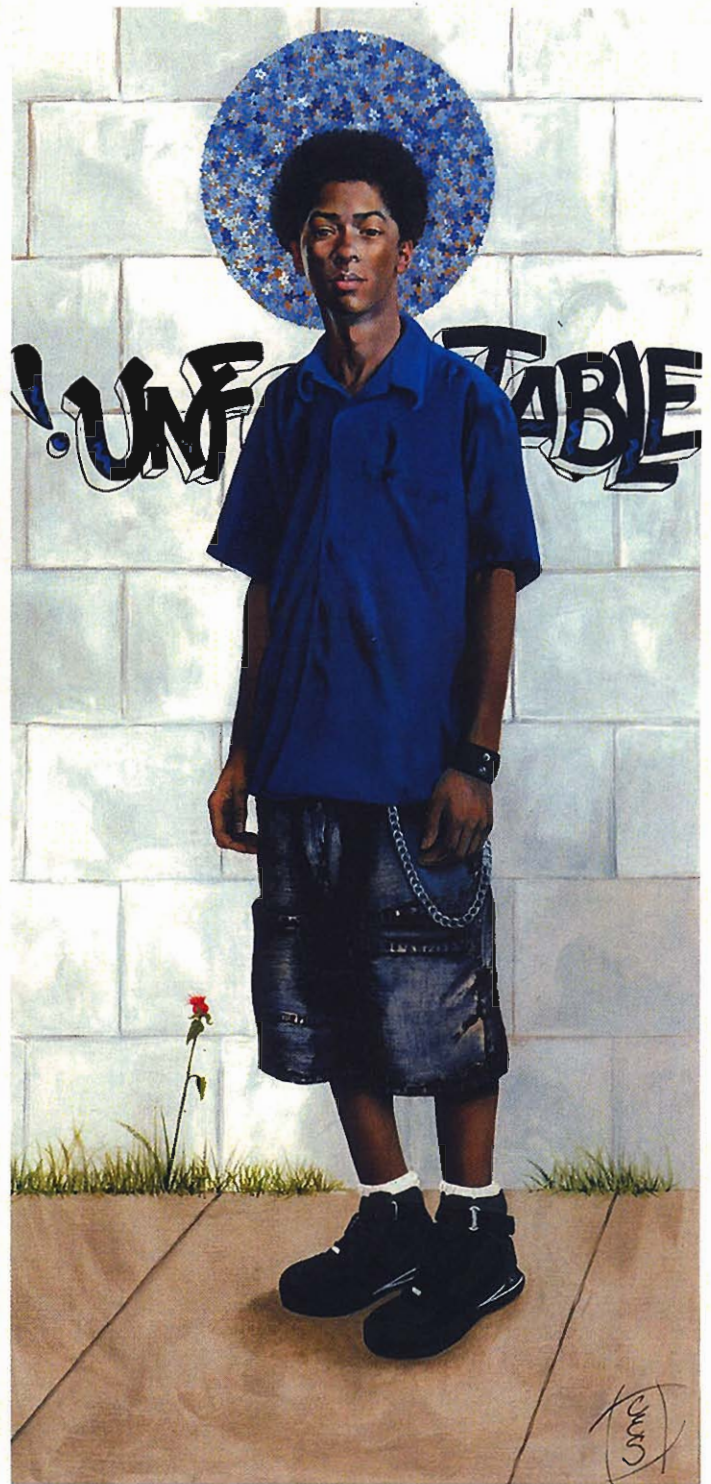


EVE, OIL ON LINEN, 36 X 72"

The Artist Says: I have painted many images both traditional and contemporary of Eve in the Garden. Some of my Eves are confrontational, others knowledgeable and others submissive and fresh from the rib, so-to-speak. This painting was commissioned by an adoring husband and modeled for by his agreeable bride.

get this scale, you are just awestruck at times."

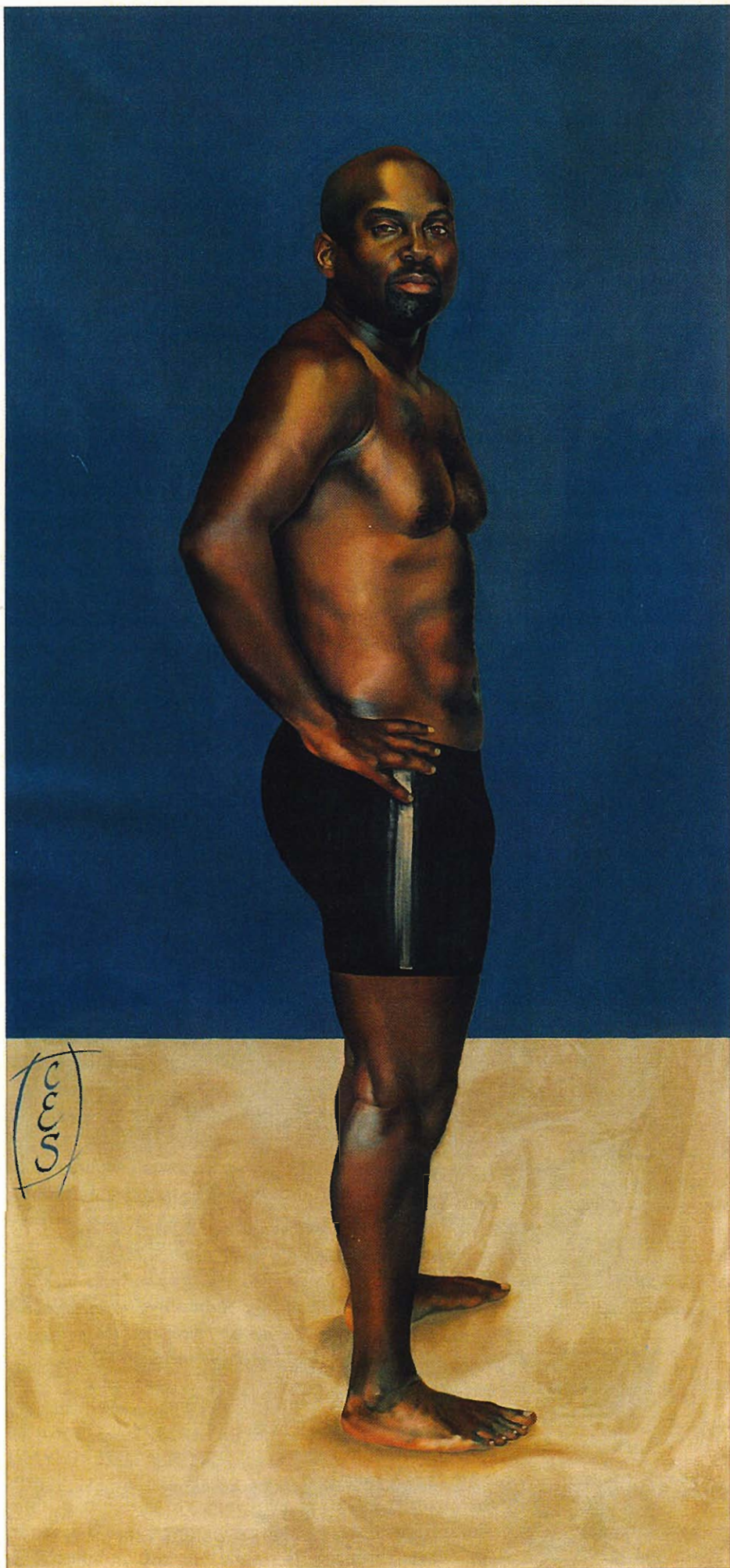
In her newer paintings, Scopelitis is also becoming more and more interested in capturing people at important, transitional periods in their lives. Currently, she is interested in the changes she sees from adolescence to adulthood.



UNFORGETTABLE, OIL ON LINEN, 36 X 84"

The Artist Says: When you enter George's presence, you sense immediately his pure and quiet soul. George is my young and brilliant art student. Life dealt this young man a learning disability that causes some people to walk right by and miss out of what George has to offer the world. No one wants to be invisible or forgotten...thus, the halo of forget-me-not flowers and the homage to teenage youths trying to create a place for themselves in the future.

"I find models everywhere and anywhere," says Scopelitis. "Some are family members while others are just people who have the qualities I need at that time. I'm currently pushing the series towards the edge, and trying to capture that tender moment when a teenager is a child but also an adult. That



really intrigues me and I want to show a presence that a person walking in to a gallery couldn't be able to ignore, whether they knew the person or not."

Scopelitis, though, believes that the success of these new contemporary figurative works ultimately rests with her ability to accurately render the figure.

"I like to be respected for my technical prowess and I really know the figure and understand the figure and that thrills me. It's a thread that has existed throughout my whole career," says Scopelitis. "I was told one time that as an artist you should stick with what you know and that if you're good at something, you should never want to lose it."

Scopelitis also wants collectors to pay close attention to all the disparate elements of each piece and not to miss on the subtleties that she includes in these paintings.

"If they can pause long enough they will notice that I put nothing in that doesn't have some kind of meaning," says Scopelitis. "I'm very deliberate and if I have a particular kind of flower or position, these symbols and sign have meaning from a general art historical perspective. There are think and wonder about, like where I try to position a landscape, where the horizon line is or how I bisect a canvas." ●

For a direct link to the exhibiting gallery go to



www.americanartcollector.com

LOYAL, OIL ON LINEN, 36 x 72"

The Artist Says: The model for this painting is my favorite muse. His power in both mind and body truly exemplifies the "Power of Presence."



Price Range Indicator

Our at-a-glance Price Range Indicator shows what you can expect to pay for this artist's work.

	Small	Medium	Large
2000	\$2,000	\$4,000	\$7,500
2004	\$5,000	\$7,500	\$15,000
2007	\$7,000	\$12-15,000	\$22,000



CONSTANCE IN STUDIO WITH HER NEXT PAINTING ON THE EASEL



The Gallery Says . . .

"Constance Edwards Scopelitis' collection of paintings from *The Power of Presence* exhibition are amazing—all the figures are expertly rendered. Her skillful technique and the size of the paintings make this show interesting and provocative. As the clever title of the show suggests, the paintings have 'the power of presence'"

*— Marion Meyer, owner,
Marion Meyer Contemporary Art*

CONSTANCE EDWARDS SCOPELITIS